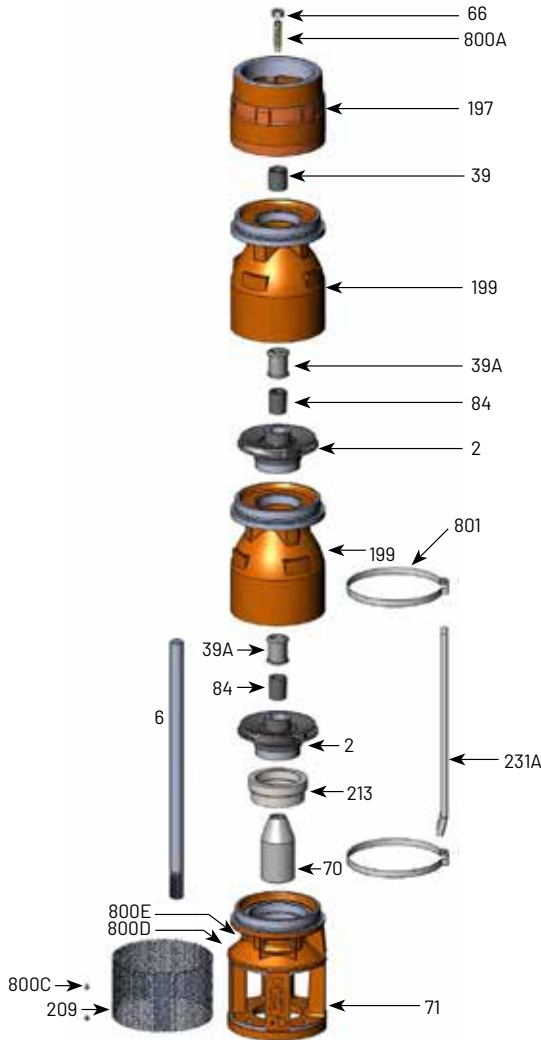


7TMH SERIES

500 GPM, 60HZ, NPT, 8" MOTORS

| | |
|------------|---------------|
| Section | ST-7TMH |
| Page | 1.0 |
| Date | June 1, 2018 |
| Supersedes | March 1, 2016 |


TABLE 1 – 7TMH-500 Common Parts Group

| Item Number | Part Number | Description | Required Qty |
|-----------------|-------------|--|--------------|
| 2 | See Table 3 | Impeller | 1 Per Stage |
| 6 | See Table 4 | Shaft | 1 |
| 39 | M15886 | Vesconite Bearing | 1 |
| 39A | S13636 | Neoprene Bearing | 1 Per Stage |
| 66 | M15881 | Upthrust Nut, 1/2-13 LH | 1 |
| 70 | B87061 | 8" Motor Coupling | 1 |
| 71 | M16573 | 7TMH 8" Motor Suction Bracket | 1 |
| 84 | S05301 | 1" Collet | 1 Per Stage |
| 197 | M16387 | 7TMH discharge 5 x 6 NPT | 1 |
| 199 | B86792 | 7TMH-500 Bowl (incl. Neoprene Bearing) | 1 Per Stage |
| 209 | M16578 | Suction Screen | 1 |
| 213 | M16586 | Insert 7TMH-500 8" Suction Bracket | 1 |
| 231A | M10252 | Cable Guard, 8" material | 1 |
| 800A | M15882 | Upthrust Screw, 1/2-13 LH | 1 |
| 800C | M15937 | Screen Screw, 8-32 x 3/8 Panhead | 2 |
| 800D | M10199 | Rivet, 3/32 | 2 |
| 800E | M09653 | Nameplate | 1 |
| 801 | M10102 | 7TMH Cable Guard Clamp | 2 |
| Not Illustrated | M09970 | Tag, Upthrust Adjustment | 1 |
| Not Illustrated | B87159 | Bolt Kit, 8" Motor | 1 |
| Not Illustrated | BE972 | Owner's Manual | 1 |

Note 1: B86886 includes items 39, 66, 197, 800A

Note 2: B86797 includes 71 and 213

TABLE 2 – Additional Staging

| Item Number | Part Number | Description | Required Qty |
|-------------|-------------|--|--------------|
| 39A | S13636 | Neoprene Bearing | 1 Per Stage |
| | S10708 | Bronze Bearing | |
| 199 | B86792 | 7TMH-500 Bowl (incl. Neoprene Bearing) | 1 Per Stage |
| 84 | S05301 | 1" Collet | 1 Per Stage |
| 2 | See Table 3 | Impeller | 1 Per Stage |

Note 3: Bronze bearing may be used in place of the standard Neoprene Bearing.

TABLE 3

| Item Number | Part Number | Description | Required Qty |
|-------------|-------------|------------------------------|--------------|
| 2 | M16568 | 7TMH-500 "A" Impeller 5.982" | See Table 4 |
| | M16570 | 7TMH-500 "B" Impeller 5.410" | |
| | M16767 | 7TMH-500 "C" Impeller 5.315" | |

TABLE 4 – 60 Hz Staging Requirements Build Table

| Series | HP/kW | Stages | Trim | | | 416 SS shaft | | Ion-nitride shaft | | Shaft Length (in/mm) | Cable Guard Length ⁷ | Assembled pump length (motor not included) |
|-------------|------------|--------|------|-----|-----|---------------------|-------------------------------|---------------------|------------------------------------|----------------------|---------------------------------|--|
| | | | "A" | "B" | "C" | Pump catalog number | 416 SS Shaft p/n ⁶ | Pump catalog number | Ion Nitride Shaft p/n ⁶ | | | |
| 7TMH40-500 | 40/29.8kW | 3 | 2 | 1 | | B86947 | M15919 | B86947N | M15950 | 31.25 in/793.75 mm | 27.5 in/698.5 mm | 36.75 in/934 mm |
| 7TMH50-500 | 50/37.3kW | 4 | 2 | 2 | | B86948 | M16689 | B86948N | M16689N | 39.25 in/996.95 mm | 35.5 in/901.7 mm | 44.75 in/1137 mm |
| 7TMH60-500 | 60/44.7kW | 5 | 2 | 2 | 1 | B86949 | M16690 | B86949N | M16690N | 47.25 in/1200.15 mm | 43.5 in/1104.9 mm | 52.75 in/1340 mm |
| 7TMH75-500 | 75/55.9kW | 6 | 3 | 3 | | B86950 | M16099 | B86950N | M16132 | 55.25 in/1403.35 mm | 51.5 in/1308.1 mm | 61.87 in/1572 mm |
| 7TMH100-500 | 100/74.6kW | 8 | 4 | 4 | | B86951 | M16691 | B86951N | M16691N | 71.25 in/1809.75 mm | 67.5 in/1714.5 mm | 77.87 in/1978 mm |

Note 4: Effective assembled pump diameter with cable guard lying flat against pump is 7.5 inches

Note 5: 6" and 8" pumps use the same shafts.

Note 6: Cable guard M10252 sold in 8' (2.44M) lengths only